

Overview

- pulsed red LED
- PNP
- potentiometer, 270°
- connector M8
- -25 ... 55 °C
- IP 40



Picture similar



Technical data

General data

Actual range Sb (FSE 200C1002)	160 mm
Sensing distance Tw (FUE 200C1003)	45 mm
Light source	Pulsed red LED
Light indicator	LED yellow
Alignment / soiled lens indicator	Flashing light indicator
Adjustment	Potentiometer, 270°
Wave length	660 nm
Suppression of reciprocal influence	Yes

Electrical data

Response time / release time	< 1 ms
Voltage supply range +Vs	10 ... 30 VDC
Current consumption max. (no load)	30 mA

Electrical data

Current consumption typ.	20 mA
Voltage drop Vd	<1.8 VDC
Output function	Light / dark operate
Output circuit	PNP
Output current	100 mA
Short circuit protection	Yes
Reverse polarity protection	Yes

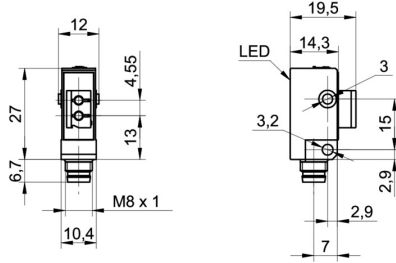
Mechanical data

Width / diameter	10.4 mm
Height / length	27 mm
Depth	14 mm
Type	Rectangular
Housing material	Plastic (ASA)
Connection types	Connector M8

Ambient conditions

Operating temperature	-25 ... +55 °C
Protection class	IP 40

Dimension drawing



Connection diagram

