

Insulating sleeve $\varnothing 10$ mm/ $\varnothing 12$ mm/25 mm long

Article number: 11116921

Overview

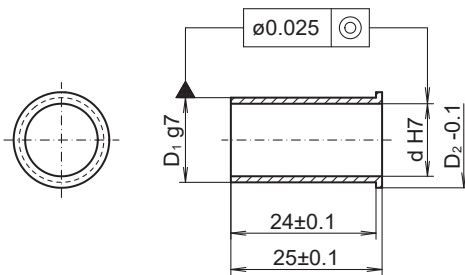
- Insulating sleeve to protect against wave currents
- Suitable for motor shaft diameter 10 mm



Description

Insulation sleeves reliably protect the encoder against damage by shaft currents. For drive shafts $\varnothing 10$ mm. Basic product is encoder OptoPulse® EIL580 in hollow shaft design $\varnothing 12$ mm. Later exchange without any tools. Material: Glass-fiber reinforced plastic

Dimensions



d H7	D ₁ g7	D ₂ -0.1
$\varnothing 10$	$\varnothing 12$	$\varnothing 13.8$