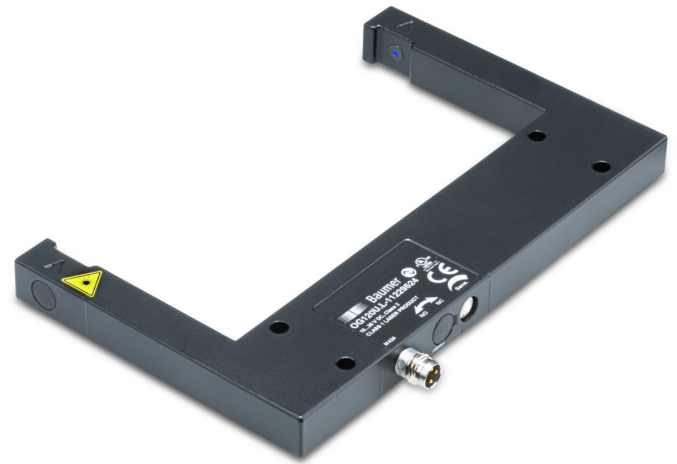


## Overview

- through beam sensor
- 120 mm
- pulsed red laser diode
- Push-Pull
- potentiometer / IO-Link
- connector M8, 3 pin
- -25 ... 60 °C
- IP 67



Picture similar



## Technical data

### General data

Type	Through beam sensor
Object size	> 0,2 mm
Repeat accuracy	< 0,01 mm
Hysteresis	< 0,05 mm
Sensitivity adjustment	Potentiometer, 270° IO-Link
Light source	Pulsed red laser diode
Wave length	670 nm
Laser class	1
Light indicator	LED yellow

### Communication interface

IO-Link	Yes
Interface	IO-Link V1.1

### Electrical data

Response time / release time	< 0.1 ms
Switching frequency	< 5000 Hz, default < 2000 Hz < 1000 Hz < 10000 Hz
Voltage supply range +Vs	10 ... 30 VDC

### Electrical data

Current consumption max. (no load)	30 mA
Output function	Light / dark operate switchable
Output circuit	Push-pull / IO-Link
Voltage drop Vd	< 2,8 VDC
Output current	< 200 mA
Short circuit protection	Yes
Reverse polarity protection	Yes

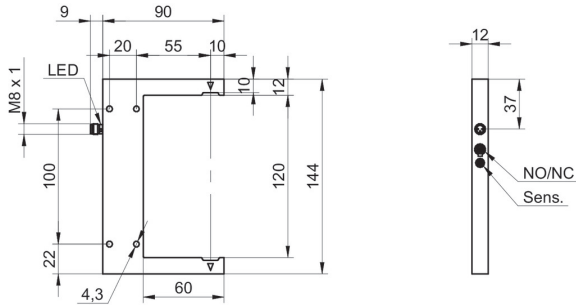
### Mechanical data

Width / diameter	144 mm
Fork width Sb	120 mm
Height / length	90 mm
Penetration depth	60 mm
Depth	12 mm
Type	U profile
Housing material	Die-cast zinc
Connection types	Connector M8, 3 pin

### Ambient conditions

Operating temperature	-25 ... +60 °C
Protection class	IP 67

## Dimension drawing



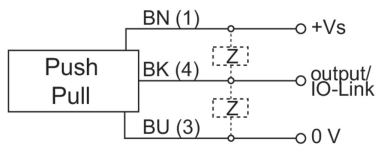
## Laser warning

**CLASS 1 LASER  
PRODUCT**

IEC 60825-1/2014

Complies with 21 CFR 1040.10 and 1040.11 except for conformance with IEC 60825-1 Ed. 3., as described in Laser Notice No. 56, dated May 8, 2019

## Connection diagram



## Pin assignment

