

O300.DI-11199081

Distanz-Sensoren

Distance sensors

Détecteurs de mesure de distances



11199081



Baumer Electric AG · CH-8501 Frauenfeld
Phone +41 (0)52 728 1122 · Fax +41 (0)52 728 1144

Canada
Baumer Inc.
CA-Burlington, ON L7M 4B9
Phone +1 (1)905 335-8444

China
Baumer (China) Co., Ltd.
CN-201612 Shanghai
Phone +86 (0)21 6768 7095

Denmark
Baumer A/S
DK-8210 Aarhus V
Phone +45 (0)8931 7611

France
Baumer SAS
FR-74250 Fillinges
Phone +33 (0)450 392 466

Germany
Baumer GmbH
DE-61169 Friedberg
Phone +49 (0)6031 60 07 0

India
Baumer India Private Limited
IN-411038 Pune
Phone +91 20 2528 6833/34

Italy
Baumer Italia S.r.l.
IT-20090 Assago, MI
Phone +39 (0)2 45 70 60 65

Singapore
Baumer (Singapore) Pte. Ltd.
SG-339412 Singapore
Phone +65 6396 4131

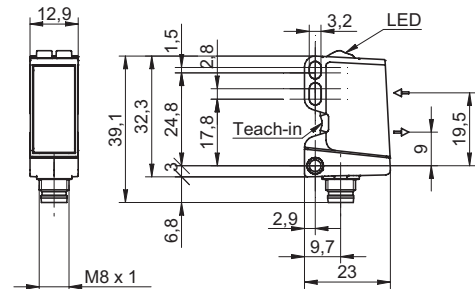
Sweden
Baumer A/S
SE-56133 Huskvarna
Phone +46 (0)36 13 94 30

Switzerland
Baumer Electric AG
CH-8501 Frauenfeld
Phone +41 (0)52 728 1313

United Kingdom
Baumer Ltd.
GB-Watchfield, Swindon, SN6 8TZ
Phone +44 (0)1793 783 839

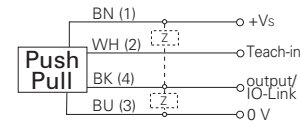
USA
Baumer Ltd.
US-Southington, CT 06489
Phone +1 (1)860 621-2121

Abmessungen Dimensions Dimensions

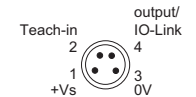


- Alle Masse in mm
- All dimensions in mm
- Toutes les dimensions en mm

Elektrischer Anschluss Connection diagram Schéma de raccordement



BN = Braun/brown/brun
WH = Weiss/white/blanc
BK = Schwarz/black/noir
BU = Blau/blue/bleu



¹⁾ Class 2, UL 1310, see FAQ

- Vor dem Anschliessen des Sensors die Anlage spannungsfrei schalten.
- Disconnect power before connecting the sensor.
- Mettre l'installation hors tension avant le raccordement du détecteur.

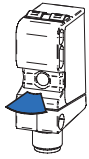
Technische Daten

Technical data

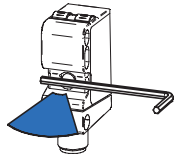
Données techniques

Messdistanz Sd	30 ... 300 mm	measuring distance Sd	30 ... 300 mm	Distance de mesure Sd	30 ... 300 mm
Strahlform	Punkt	beam type	point	Forme du faisceau	point
Ausrichtung optische Achse	< 2°	alignment optical axis	< 2°	Axe d'alignement optique	< 2°
Betriebsspannungsreich +Vs ¹⁾	10 ... 30 VDC	voltage supply range +Vs ¹⁾	10 ... 30 VDC	Plage de tension +Vs ¹⁾	10 ... 30 VDC
Stromaufnahme max. (ohne Last)	45 mA	current consumption max. (no load)	45 mA	Consommation max. (sans charge)	45 mA
Spannungsabfall Vd	< 3 VDC	voltage drop Vd	< 3 VDC	Tension résiduelle Vd	< 3 VDC
verpolungsfest	ja	reverse polarity protection	yes	Protégé contre inversion polarité	oui
kurzschlussfest	ja	short circuit protection	yes	Protégé contre courts-circuits	oui
Schnittstelle	IO-Link V1.1	interface	IO-Link V1.1	Interface	IO-Link V1.1
Arbeitstemperatur	-25 ... +60 °C	operating temperature	-25 ... +60 °C	Température de fonctionnement	-25 ... +60 °C
Schutzart	IP 67	protection class	IP 67	Classe de protection	IP 67

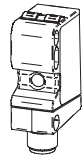
qTeach Status



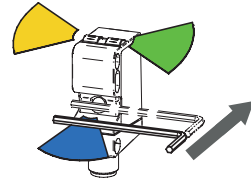
Bereit
Ready
Prêt



Werkzeug erkannt
Tool detected
Outil reconnu



qTeach OFF



Kurzes antippen
Tap shortly
Touche brièvement

Allgemeine Hinweise (siehe FAQ)

- qTeach verriegelt 5 min nach dem Einschalten.
- Im Teachmodus wechselt der Ausgang in den nichtgeschalteten Zustand.
- Im Normalbetrieb muss die Teachleitung auf 0 V gelegt werden.
- Für externes Teach-in, Teachleitung entsprechend mit Vs+ verbinden.
- Beim 2-Punkt Teach-in wird die Funktion Hell-/Dunkel schaltend durch die Reihenfolge des Einlernens bestimmt.

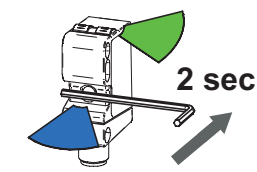
General information (see FAQ)

- qTeach locks 5 min after switching-on.
- In teach mode the output changes to the non-switched state.
- In normal mode the teach wire is set to 0 V.
- For external teach-in, connect teach wire correspondingly to Vs+.
- During 2-point teach-in the light-dark switching function is determined by the teach-in order.

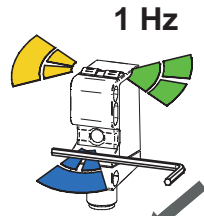
Remarques générales (consultez FAQ)

- qTeach se verrouille 5 min après l'enclenchement.
- En mode Teach, la sortie dans l'état non commutée.
- En fonctionnement normal, la connexion Teach doit être placée sur 0 V.
- Pour le Teach-in externe, raccorder en conséquence la connexion sur Vs+.
- Teach à 2 points, la fonction de commutation claire/sombre est déterminée par l'ordre d'apprentissage.

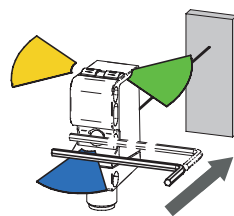
1-Punkt Teach 1-point teach Teach à 1 point



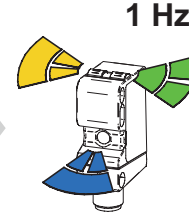
Werkzeug erkannt, LED heller
Tool detected, LED brighter
Outil reconnu, LED plus lumineuse



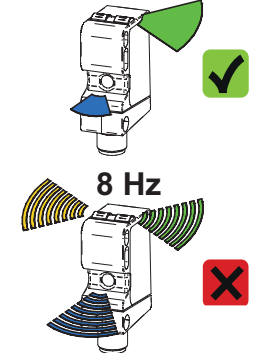
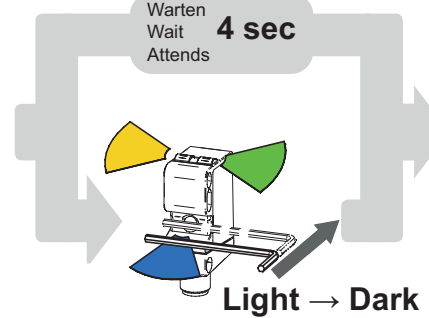
LEDs blinken
Flashing LEDs
Clignotement LEDs



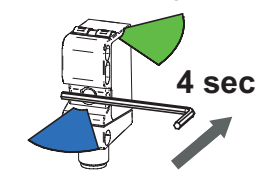
Objekt platzieren, kurz antippen
Place object, tap shortly
Positionnez l'objet, touchez rapidement



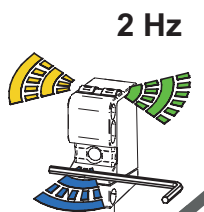
LEDs blinken
Flashing LEDs
Clignotement LEDs



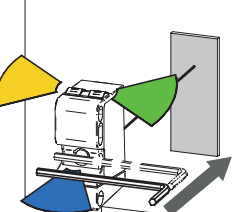
2-Punkt Teach 2-point teach Teach à 2 point



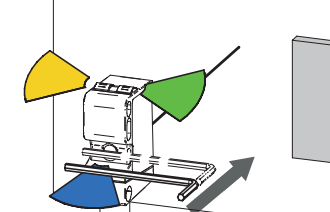
Werkzeug erkannt, LED heller
Tool detected, LED brighter
Outil reconnu, LED plus lumineuse



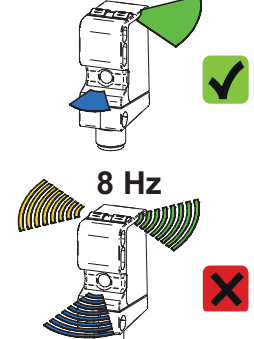
LEDs blinken
Flashing LEDs
Clignotement LEDs



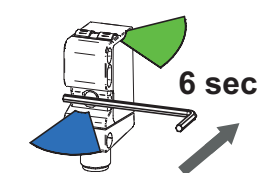
Objekt platzieren, kurz antippen
Place object, tap shortly
Positionnez l'objet, touchez rapidement



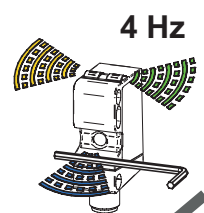
Hintergrund platzieren, kurz antippen
Place background, tap shortly
Positionnement d'arrière-plan, touchez rapidement



Werkseinstellung Factory reset Remise à l'état initial



Werkzeug erkannt, LED heller
Tool detected, LED brighter
Outil reconnu, LED plus lumineuse



LEDs blinken
Flashing LEDs
Clignotement LEDs

Keine weiteren Eingriffe nötig
No further action required
Pas d'autres interventions

